

**Anti-CDH17 / Cadherin-17 Reference Antibody (PTA001\_A4)  
Recombinant Antibody  
Catalog # APR10823****Specification**

---

**Anti-CDH17 / Cadherin-17 Reference Antibody (PTA001\_A4) - Product Information**

Application	FC, Kinetics, Animal Model
Primary Accession	<a href="#">Q12864</a>
Reactivity	Human
Clonality	Monoclonal
Isotype	IgG1
Calculated MW	149.12 KDa

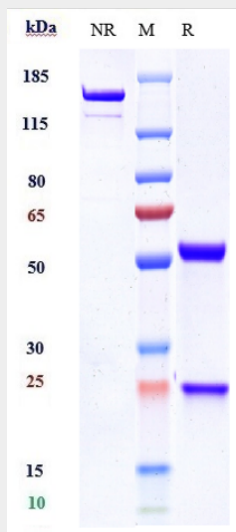
**Anti-CDH17 / Cadherin-17 Reference Antibody (PTA001\_A4) - Additional Information****Target/Specificity**  
CDH17 / Cadherin-17**Endotoxin**  
< 0.001EU/ µg,determined by LAL method.**Conjugation**  
Unconjugated**Expression system**  
CHO Cell**Format**  
Purified monoclonal antibody supplied in PBS, pH6.0, without preservative.This antibody is purified through a protein A column.**Anti-CDH17 / Cadherin-17 Reference Antibody (PTA001\_A4) - Protein Information****Name** CDH17**Function**  
Cadherins are calcium-dependent cell adhesion proteins. They preferentially interact with themselves in a homophilic manner in connecting cells; cadherins may thus contribute to the sorting of heterogeneous cell types. LI-cadherin may have a role in the morphological organization of liver and intestine. Involved in intestinal peptide transport.**Cellular Location**  
Cell membrane; Single-pass type I membrane protein**Tissue Location**  
Expressed in the gastrointestinal tract and pancreatic duct. Not detected in kidney, lung, liver, brain, adrenal gland and skin.

## Anti-CDH17 / Cadherin-17 Reference Antibody (PTA001\_A4) - Protocols

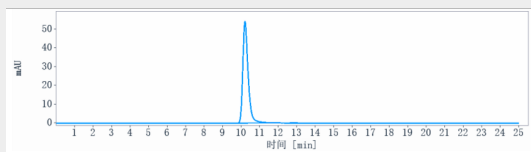
Provided below are standard protocols that you may find useful for product applications.

- [Western Blot](#)
- [Blocking Peptides](#)
- [Dot Blot](#)
- [Immunohistochemistry](#)
- [Immunofluorescence](#)
- [Immunoprecipitation](#)
- [Flow Cytometry](#)
- [Cell Culture](#)

## Anti-CDH17 / Cadherin-17 Reference Antibody (PTA001\_A4) - Images



Anti-CDH17 / Cadherin-17 Reference Antibody (PTA001\_A4) on SDS-PAGE under reducing (R) condition. The gel was stained with Coomassie Blue. The purity of the protein is greater than 90%



The purity of Anti-CDH17 / Cadherin-17 Reference Antibody (PTA001\_A4) is more than 95%, determined by SEC-HPLC.